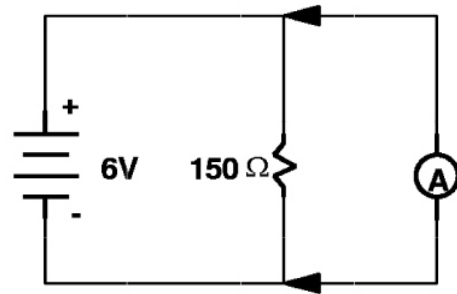


PC/CP200 Electronics Laboratory I - Quiz 2

1. In the circuit shown to the right, the ammeter should read:



2. A battery is a cluster of voltaic cells connected together for greater voltage and/or current capacity. A typical automotive lead-acid battery uses 2.2V cells, for a nominal voltage output of 13.2 volts. How many cells are used? Are the cells connected in series or in parallel. Justify
3. Suppose you have three 1 k ohm resistors available. Can you connect them to achieve the following equivalent resistance values? If yes, draw the circuit and justify your design.
- a. 3 k ohm
 - b. 333 ohm
 - c. 1.5 k ohm